



L'AGENCE DE SAINT RÉMY

MADE IN ALPILLES

1 498 000 €

Buying village house

7 rooms

Surface : 200 m²

Surface of the land : 450 m²

Year of construction : Rénovation 2019

Exposition : Sud

View : Jardin

Inner condition : excellent

External condition : new

Couverture : tiles

Amenities :

Piscine 5/2 chlore, Plancher

rafraichissant, charming house,

Menuiserie bois, double glazing, guest

room can, Clim dans chambres, downtown

6 bedroom

1 bathroom

2 showers

4 WC

2 parkings

Legal information

1 498 000 € fees included

5,49% VAT of fees paid by the buyer

(1 420 000 € without fees), no current

procedure, information on the risks to which

this property is exposed is available on

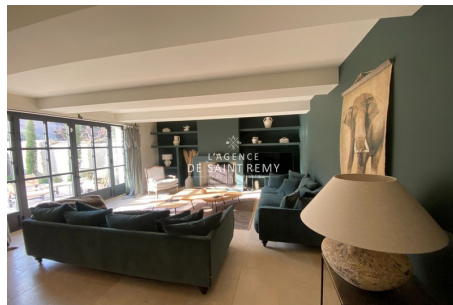
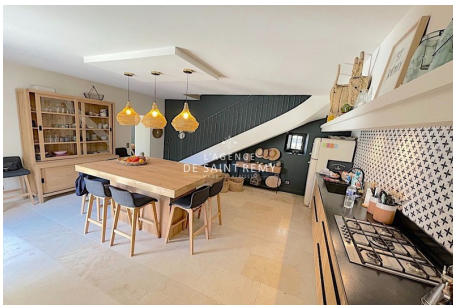
georisques.gouv.fr



Village house 475s Saint-Rémy-de-Provence

House in downtown St Rémy de Pce, luxury, comfort, cocooning. This townhouse offers a south facing lounge with bay opening onto the shaded terrace and the swimming pool, a fully equipped dining kitchen and a scullery. 4 bedrooms including a suite with dressing room, an office (or bedroom) and an independent suite complete the night offer. Careful decoration down to the smallest detail and location in the heart of the village center allows you to benefit from local shops, the market, numerous restaurants on foot.... Private enclosed parking, car gate.

Energy class (dpe) : B - Emission of greenhouse gases (ges) : A
Document non contractuel - 08/08/2024



L'agence de Saint Rémy - 43, bd Victor Hugo - Saint-Rémy-de-Provence

Tél: 04 90 20 80 70 - lagencedesaintremy@gmail.com

Carte professionnelle n°CPI 13012018000031153 et CPI 13012018000030996 - RCS TARASCON 802 930 420

Protocole COVID : Vendeur et visiteur portent un masque pendant la visite et utilise leur propre gel hydro alcoolique. Visites: 30 minutes max, (1 par demie-journée) 1 personne max, aérer les pièces 15mn avant et après. Échangez les docs par emails. Les visiteurs ne doivent rien toucher. Respectez la distanciation physique. Pièces infé à 10m2: 2 personnes max. Chacun utiliser son gel hydro alcoolique et utiliser son propre stylo. Si vous avez un doute (fièvre, toux etc.) il vaut mieux reporter la visite.