



L'AGENCE DE SAINT RÉMY

MADE IN ALPILLES

795 000 €

Buying village house

6 rooms

Surface : 178 m²

Surface of the living : 60 m²

Surface of the land : 423 m²

Year of construction : 1900

Exposition : Sud

View : Jardin

Hot water : Electrique

Inner condition : new

External condition : renovated

Couverture : tiles

Amenities :

Jardin clos de murs, Piscines 6x3

chauffée, electric gate, charming house,

Garage porte électrique, alarm, guest room

can, Visiophone, Conduit pour poêle

(séjours), Forage & eau de ville

5 bedroom

1 terrace

1 bathroom

3 showers

2 WC

1 garage

2 parkings

Legal information

795 000 € fees included

5,30% VAT of fees paid by the buyer

(755 000 € without fees), no current

procedure, information on the risks to which

this property is exposed is available on

georisques.gouv.fr

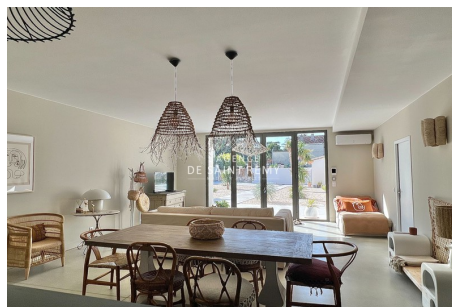


Village house 493s Maillane

Village farmhouse, quiet with garden and heated swimming pool, approximately 180m² beautiful volumes and high ceilings, living room, open fitted kitchen with island and black marble worktop, bedroom with bathroom and toilet, pantry, hallway, laundry room . On the 1st floor: landing, 4 bedrooms, 3 shower rooms, and separate toilet. Enclosed grounds of 423m² heated swimming pool 3x6m, beach, terrace, outbuilding, parking, backyard, technical room. Total renovation by professionals, ten-year guarantee (roof, plumbing, electricity, concrete floor and old mosaic floor) The Saint Rémy agency selected this property not only for the quality of its renovation and its materials, but also for its combination of "preserved old character" with a "contemporary look" and today's comfort, bathed in of light and original atmosphere & "southern" spirit. In a family home, pied à terre in Provence and also ideal for a seasonal rental investment, you will be...

Energy class (dpe) : A - Emission of greenhouse gases (ges) : A

Document non contractuel - 15/02/2025



L'agence de Saint Rémy - 43, bd Victor Hugo - Saint-Rémy-de-Provence

Tél: 04 90 20 80 70 - lagencedesaintremy@gmail.com

Carte professionnelle n°CPI 13012018000031153 et CPI 13012018000030996 - RCS TARASCON 802 930 420

Protocole COVID : Vendeur et visiteur portent un masque pendant la visite et utilise leur propre gel hydro alcoolique. Visites: 30 minutes max, (1 par demie-journée) 1 personne max, aérer les pièces 15mn avant et après. Échangez les docs par emails. Les visiteurs ne doivent rien toucher. Respectez la distanciation physique. Pièces infé à 10m2: 2 personnes max. Chacun utiliser son gel hydro alcoolique et utiliser son propre stylo. Si vous avez un doute (fièvre, toux etc.) il v vaut mieux reporter la visite.