



1 365 000 €

**Buying townhouse**

**6 rooms**

**Surface : 215 m²**

**Surface of the land : 281 m²**

**View : Jardin**

**Inner condition : good**

**External condition : good**

**Couverture : tiles**

**Amenities :**

City water, Bassin, alarm, Menuiserie aluminium, fireplace, Adoucisseur d'eau, Jardin clos arboré,..., spray

4 bedroom

1 terrace

2 bathrooms

2 showers

2 parkings

**Legal information**

1 365 000 € fees included

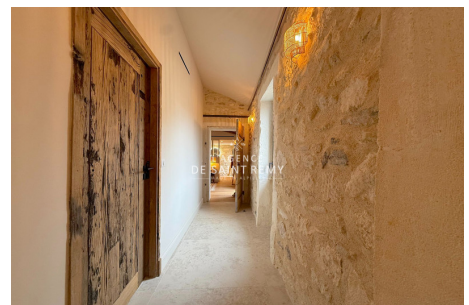
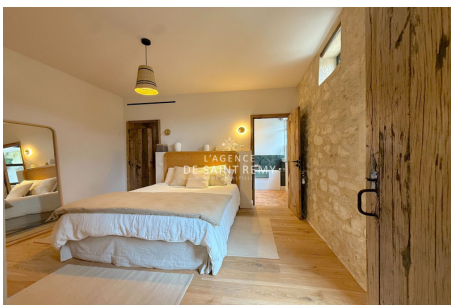
5,00% VAT of fees paid by the buyer (1 300 000 € without fees), no current procedure, information on the risks to which this property is exposed is available on [georisques.gouv.fr](http://georisques.gouv.fr).



**Townhouse 666s Saint-Rémy-de-Provence**

Just a few minutes' walk from the center of the village of Saint Rémy de Provence, you'll find this 230m² stone house that has been renovated to a very high standard: the enhancement of old materials blends seamlessly with natural and noble textures, every detail carefully crafted to ensure charm, elegance, and premium features are all part of the experience... This town Mas is accessed through an inner courtyard where you can enjoy the stunning exposed stone façade, a trellis shading the outdoor terrace, and a basin — all complemented by stone borders, a fountain, plants, and exterior lighting... The house offers two main reception areas both opening onto the courtyard: first, a high-end eat-in kitchen where raw wood, a marble countertop, and zellige tiles perfectly complement the exposed stone walls. Next, a spacious and beautiful double living room with a fireplace. On the ground floor, a superb suite with a bathroom that also boasts a...

Document non contractuel - 26/01/2026



**L'agence de Saint Rémy - 43, bd Victor Hugo - Saint-Rémy-de-Provence**

Tél: 04 90 20 80 70 - [lagencedesaintremy@gmail.com](mailto:lagencedesaintremy@gmail.com)

Carte professionnelle n°CPI 13012018000031153 et CPI 13012018000030996 - RCS TARASCON 802 930 420