



# L'AGENCE DE SAINT RÉMY

MADE IN ALPILLES

2 794 000 €

## Buying contemporary house

6 rooms

Surface : 260 m<sup>2</sup>

Surface of the living : 100 m<sup>2</sup>

Surface of the land : 10000 m<sup>2</sup>

Year of construction : 2017

Exposition : Sud

View : Jardin

Hot water : Thermodynamique

Inner condition : good

External condition : good

Couverture : tiles

### Amenities :

bedroom bungalow , Piscine 20x5,  
panneaux solaires, alarm, fireplace,  
bungalow , drilling, City water, house near  
center

4 bedroom

1 terrace

1 bathroom

3 showers

5 WC

1 garage

4 parkings

### Legal information

2 794 000 € fees included

5,26% VAT of fees paid by the buyer

(2 654 300 € without fees), no current  
procedure, information on the risks to which  
this property is exposed is available on

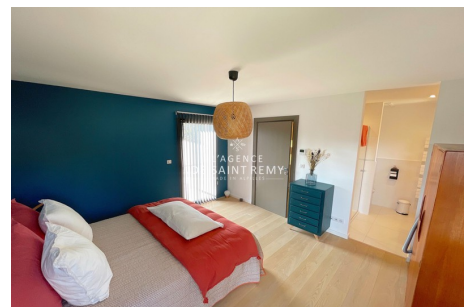
[georisques.gouv.fr](http://georisques.gouv.fr)



## Contemporary house 342 Saint-Rémy-de-Provence

Exclusively, in Saint Rémy de Provence, near the center. Contemporary property of approximately 260 m<sup>2</sup> of living space with a superb 100 m<sup>2</sup> living room bathed in light, a magnificent top-of-the-range kitchen and a through fireplace in the living room. 4 en-suite bedrooms including a master suite on the ground floor with dressing room, shower room and wc, an office and a spacious laundry room with access to a double garage. Several outdoor spaces: 20x5 swimming pool with submerged shutter, splendid equipped summer kitchen as well as a relaxation area including a sauna. Beautiful services and quality materials. Land of 1 hectare of which 3,000 m<sup>2</sup> of building remains, leaving several possibilities.

Energy class (dpe) : A - Emission of greenhouse gases (ges) : A  
Document non contractuel - 15/02/2025



L'agence de Saint Rémy - 43, bd Victor Hugo - Saint-Rémy-de-Provence

Tél: 04 90 20 80 70 - [lagencedesaintremy@gmail.com](mailto:lagencedesaintremy@gmail.com)

Carte professionnelle n°CPI 13012018000031153 et CPI 13012018000030996 - RCS TARASCON 802 930 420

**Protocole COVID :** Vendeur et visiteur portent un masque pendant la visite et utilise leur propre gel hydro alcoolique. Visites: 30 minutes max, (1 par demie-journée) 1 personne max, aérer les pièces 15mn avant et après. Échangez les docs par emails. Les visiteurs ne doivent rien toucher. Respectez la distanciation physique. Pièces infé à 10m2: 2 personnes max. Chacun utiliser son gel hydro alcoolique et utiliser son propre stylo. Si vous avez un doute (fièvre, toux etc.) il v aut mieux reporter la visite.