



L'AGENCE DE SAINT RÉMY

MADE IN ALPILLES

558 000 €

Buying villa

4 rooms

Surface : 109 m²

Surface of the living : 41 m²

Surface of the land : 500 m²

Exposition : Sud

View : Alpilles

Hot water : Thermodynamique

Inner condition : good

External condition : a refresh

Couverture : tiles

Amenities :

City water, Piscine com avec abonnement,

Tennis com. avec abonnement, charming

house, Menuiserie double vitrage

3 bedroom

1 bathroom

1 shower

3 WC

1 parking

Informations légales

558 000 € honoraires inclus

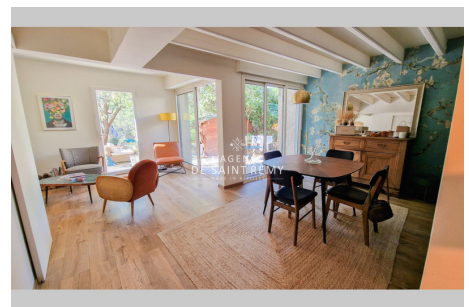
5,28% TTC d'honoraires inclus à la charge de l'acheteur (530 000 € hors honoraires), well condominium, annual current expenses 600 € (50 € par mois), aucune procédure en cours, information on the risks to which this property is exposed is available on georisques.gouv.fr



Villa 534s Les Baux-de-Provence

The prestigious Cité des Baux-de-Provence, famous and authentic Provençal village at the top of the Alpilles, House nestled in the heart of this exceptional setting, with a splendid view of the Alpilles and natural sites of extraordinary beauty. Discover this house, workshop style 112m², kitchen open to living room with double induction wood stove, 3 bedrooms including 1 master suite, 1 shower room, 1 bathroom, 3 WC and closed Box. Land of approximately 500m², not overlooked and in absolute calm. Very uncrowded collective swimming pool and tennis court, 2 minutes' walk away. The village of Les Baux offers pretty cobbled streets lined with Renaissance mansions which run to the Château esplanade, numerous restaurants from the simplest to Michelin-starred, Historical Monuments (the fortress and 21 other architectural elements classified as Historic Monuments which bear witness to of the rich and tumultuous history of the City in the Middle Ages)...

Energy class (dpe) : D - Emission of greenhouse gases (ges) : A
Document non contractuel - 30/04/2024



L'agence de Saint Rémy - 43, bd Victor Hugo - Saint-Rémy-de-Provence

Tél: 04 90 20 80 70 - lagencedesaintremy@gmail.com

Carte professionnelle n°CPI 13012018000031153 et CPI 13012018000030996 - RCS TARASCON 802 930 420

Protocole COVID : Vendeur et visiteur portent un masque pendant la visite et utilise leur propre gel hydro alcoolique. Visites: 30 minutes max, (1 par demie-journée) 1 personne max, aérer les pièces 15mn avant et après. Échangez les docs par emails. Les visiteurs ne doivent rien toucher. Respectez la distanciation physique. Pièces infé à 10m2: 2 personnes max. Chacun utiliser son gel hydro alcoolique et utiliser son propre stylo. Si vous avez un doute (fièvre, toux etc.) il vaut mieux reporter la visite.