



847 000 €

Buying apartment

4 rooms

Surface : 121 m²

Year of construction : 2017

Exposition : Sud nord

View : Jardin

Inner condition : excellent

Standing : residential

Building condition : good

Amenities :

Sol rafraichissant au rdc, Interphone et ouvre porte, Dépendance 10m2, Eclairage extérieur, Double vitrage aluminim Kline, Verre securit (fenêtre ch et entrée), Volets nord bois, Piscine 2,5x1,5 chlore (p1-1,4), En pierre et BA33, Calme dans le centre ville

3 bedroom

1 terrace

1 bathroom

2 showers

2 WC

1 parking

Legal information

847 000 € fees included

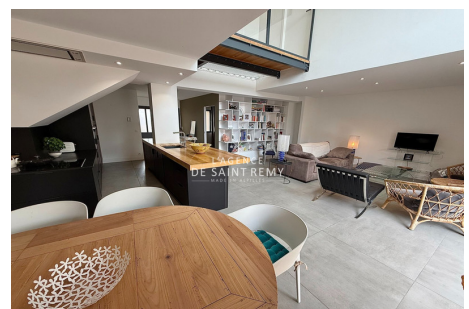
4,00% VAT of fees paid by the buyer (815 000 € without fees), well condominium(3 lots in the condominium), annual current expenses 400 € (33 € monthly), no current procedure, information on the risks to which this property is exposed is available on georisques.gouv.fr,



Apartment 618s Saint-Rémy-de-Provence

Behind a discreet gate, a subtle blend between a village house and a contemporary loft, rare nestled in the city center, this property reveals a major asset from the entrance: a private parking space, a real privilege in this sought-after neighborhood. From the moment you cross the threshold, the magic begins. A vast, dual-aspect living room of over 55 m², bathed in natural light, opens onto a 55 m² atrium, enclosed by stone walls with a plunge pool. The apartment, with its resolutely contemporary style, captivates with its generous volumes and impressive ceiling height. The large bay window blurs the boundaries between interior and exterior, harmoniously extending the space towards the patio where there is also a covered terrace and the pool and storage area. The main room accommodates a fully equipped, high-end open kitchen, as well as a large pantry offering valuable storage space. The ground floor also offers a first bedroom and a...

Energy class (dpe) : C - Emission of greenhouse gases (ges) : A
Document non contractuel - 15/06/2025



L'agence de Saint Rémy - 43, bd Victor Hugo - Saint-Rémy-de-Provence

Tél: 04 90 20 80 70 - lagencedesaintremy@gmail.com

Carte professionnelle n°CPI 13012018000031153 et CPI 13012018000030996 - RCS TARASCON 802 930 420